

\$779,000

mikegreerhomes

Rangiora

Lot 63 Bellgrove



for sale

dwelling size | section size
160 m² | 427 m²

homes
for
sale

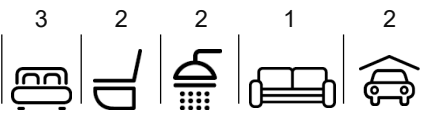


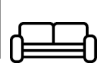

This three double bedroom, double garage, landscaped home has been designed to maximise space and sun. The North facing open plan living, dining and kitchen area forms the centre of the home and offers great indoor/outdoor flow. The well-appointed family bathroom and ensuite both feature quality fixtures and fittings that complement the spacious bedroom and living areas.

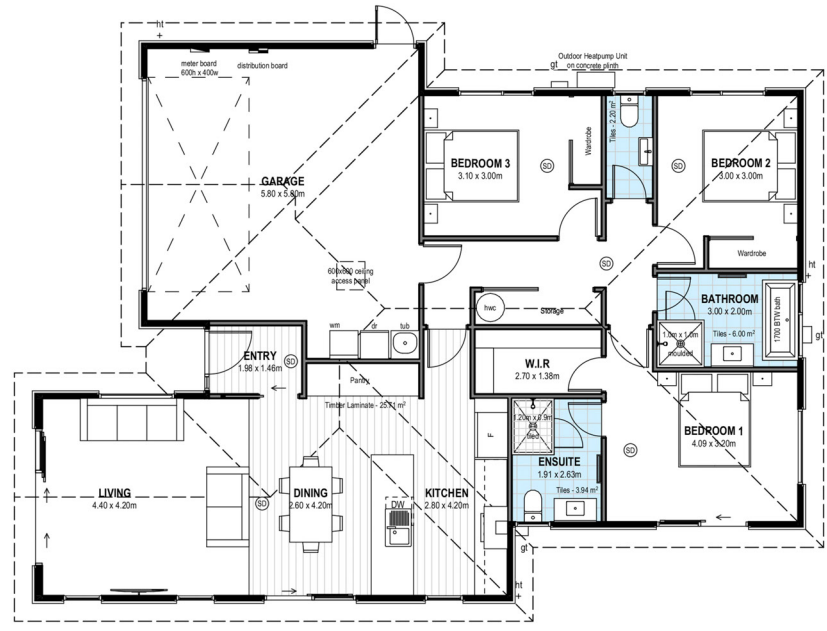
Bellgrove has been meticulously designed to offer living spaces and choices for all, promising a serene neighborhood that you'll love. Conveniently located just 30 minutes away from Christchurch city centre, Bellgrove offers an idyllic lifestyle within easy reach of all the amenities and attractions the city has to offer. The subdivision thoughtfully encompasses outdoor living spaces and neighboring recreational facilities, creating a well-rounded living experience.

more features.

- ✦ Two Car Garaging
- ✦ After Sales Care Program
- ✦ Boundary Fences
- ✦ Ensuite
- ✦ Driveway and Patios Included
- ✦ LED Lighting
- ✦ 10 Year Registered Master Build Guarantee
- ✦ Open Plan Living

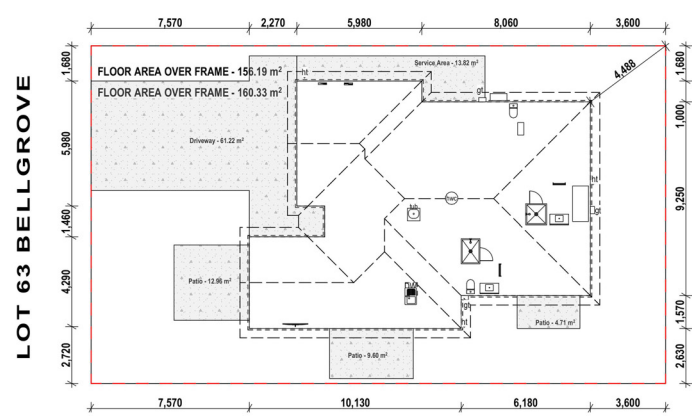
Bellgrove Lot 63 Bellgrove

dwelling size	section size	3	2	2	1	2
160 m ²	427 m ²					



After Sales Care

At Mike Greer Homes we are committed to making the build journey as stress-free as possible. Our After Sales Care programme addresses any maintenance issues and ensures that any remedial work is undertaken once it is logged and approved.



Disclaimer. While every reasonable effort has been made by Mike Greer Homes to ensure the information correctly illustrates the dwelling and section, this material may only be used by the Purchaser for illustrative and guidance purposes. Mike Greer Homes accepts no responsibility for any differences, errors or omissions which may become apparent during or on completion of the dwelling.